



RPA32/RPA2 mouse mAb

Catalog No	YP-Ab-01099
Isotype	IgG
Reactivity	Human
Applications	WB;IP;ICC
Gene Name	rpa2
Protein Name	
Immunogen	Purified recombinant human RPA32/RPA2 protein fragments expressed in E.coli.
Specificity	This antibody detects endogenous levels of RPA32/RPA2 and does not cross-react with related proteins.
Formulation	Liquid in PBS containing 50% glycerol, 0.5% BSA and 0.02% sodium azide.
Source	Monoclonal, Mouse
Purification	The antibody was affinity-purified from mouse ascites by affinity-chromatography using epitope-specific immunogen.
Dilution	wb dilution 1:2000 icc dilution 1:200
Concentration	1 mg/ml
Purity	≥90%
Storage Stability	-20°C/1 year
Synonyms	60S acidic ribosomal protein P1;AA409079;AI325195;AU020965;HSSB;ik:tdsubc_2g1;M(2)21C; MGC137236;OTTHUMP00000004008;p32;p34;RCJMB04_6d17 replication protein A2, 32kDa;REPA 2; REPA1;REPA2;Replication factor A protein 2;Replication protein A 32 kDa subunit; Replication protein A 32kDa subunit;Replication protein A 34 kDa subunit;Replication protein A;replication protein A1 (70kD);Replication Protein A2 (32kDa);Replication protein A2 32kD;Replication protein A2 32kDa;Replication protein A2;Replication protein A2, 32kDa;RF A;RF-A protein 2;Rf-A2;RFA;RFA2_HUMAN;RP A;RP-A p32;RP-A p34;RP21C;RPA 2; RPA 32;RPA;RPA2;RPA32;RPA34;RPA70;RpLP1;RpP2;xx:tdsubc_2g1;zgc:109822.
Observed Band	32kD
Cell Pathway	Nucleus . Nucleus, PML body . Redistributes to discrete nuclear foci upon DNA damage in an ATR-dependent manner. .
Tissue Specificity	Kidney,Lung,Muscle,
Function	function:Required for DNA recombination, repair and replication. The activity of RP-A is mediated by single-stranded DNA binding and protein



interactions.,PTM:Phosphorylated in a cell-cycle-dependent manner (from the S phase until mitosis). Phosphorylated by ATR upon DNA damage, which promotes its translocation to nuclear foci. Can be phosphorylated in vitro by PRKDC/DNA-PK in the presence of Ku and DNA, and by CDC2.,subcellular location:Also present in PML nuclear bodies. Redistributes to discrete nuclear foci upon DNA damage.,subunit:Heterotrimer of 70, 32 and 14 kDa chains. The DNA-binding activity may reside exclusively on the 70 kDa subunit. Binds to SERTAD3/RBT1. Interacts with TIPIN.,

Background

function:Required for DNA recombination, repair and replication. The activity of RP-A is mediated by single-stranded DNA binding and protein interactions.,PTM:Phosphorylated in a cell-cycle-dependent manner (from the S phase until mitosis). Phosphorylated by ATR upon DNA damage, which promotes its translocation to nuclear foci. Can be phosphorylated in vitro by PRKDC/DNA-PK in the presence of Ku and DNA, and by CDC2.,subcellular location:Also present in PML nuclear bodies. Redistributes to discrete nuclear foci upon DNA damage.,subunit:Heterotrimer of 70, 32 and 14 kDa chains. The DNA-binding activity may reside exclusively on the 70 kDa subunit. Binds to SERTAD3/RBT1. Interacts with TIPIN.,

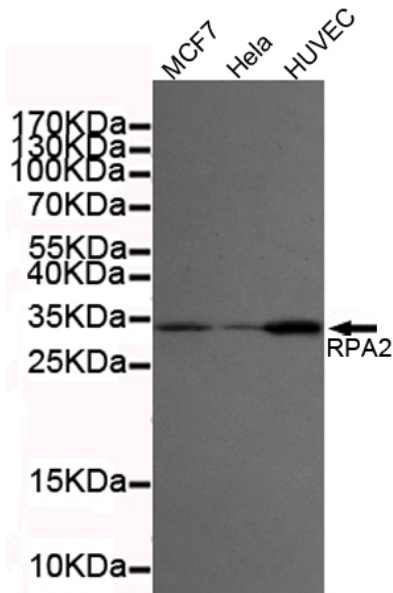
matters needing attention

Avoid repeated freezing and thawing!

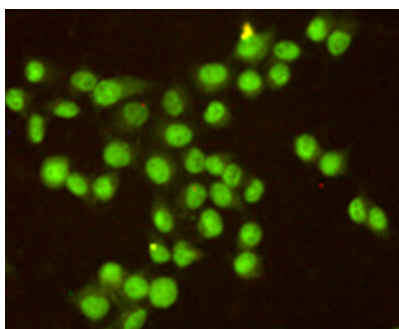
Usage suggestions

This product can be used in immunological reaction related experiments. For more information, please consult technical personnel.

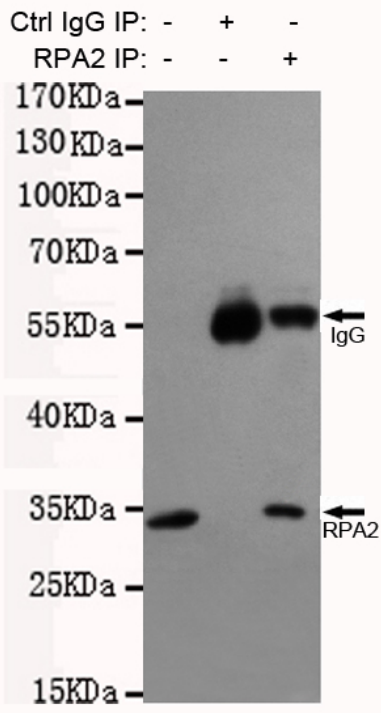
Products Images



Western blot detection of RPA32/RPA2 in MCF7,HeLa and HUVEC cell lysates using RPA32/RPA2 mouse mAb (1:2000 diluted).Predicted band size:32KDa.Observed band size:32KDa.Exposure time:20s.



Immunocytochemistry staining of HeLa cells fixed with -20°C Methanol and using anti-RPA32/RPA2 antibody (dilution 1:200).



Immunoprecipitation analysis of HeLa cell lysates using RPA32/RPA2 mouse mAb.